



Scan QR code for most up to date manual

The **RE665 Touchpad** provides Alula's intuitive interface for controlling the security system in a multi-connective form factor, utilizing either wireless or BUS communications.

Features

- 7" tablet display
- Provides local control of security and automation functionality
- Wall or table mounted
- Flat design
- Wi-Fi™ or BUS connection



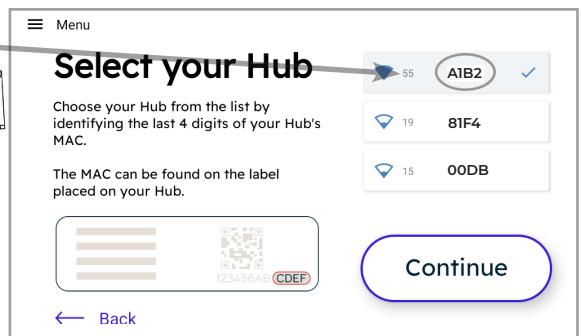
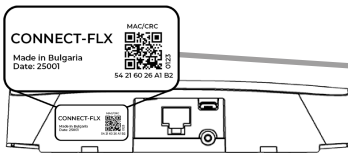
Wireless Installation Overview for Connect-FLX/Connect-XiP

1. **Choose a mounting location.** Touchpad can be mounted on a wall or tabletop.
2. **Identify your security hub** and verify signal strength before mounting it permanently.

1. Ensure the panel/hub is powered.
2. Power the Touchpad by applying AC power.
3. Select language
4. Select Wi-Fi enrollment
5. Select "Get Started". A list of available security hubs will be displayed. If the "Get Started" option is not available, press "Menu" and then "Factory Default".
6. Once a security hub is determined, verify the signal strength. If the signal strength displayed is less than 35, relocate the Touchpad or panel.

3. **Select a security hub** by selecting the last 4 digits of your security hub's MAC. Press "Continue".
4. **Put the panel into enroll mode** by pressing the enroll button for 2-3 seconds. When it enters enroll mode, it will beep. Once Touchpad enrollment is complete, a successfully connected message will appear on the Touchpad. Select "Continue".

Note: If the wrong panel was selected, press the "Restart" button in the side menu.



Troubleshooting Steps if Enrollment Fails:

- Confirm the panel is disarmed and in wireless enrollment mode. On Connect-FLX, a white light will flash, for Connect-XIP, the enroll LED will turn on.
- Check whether the panel is already full. For Connect-FLX, the limit is four Touchpads. For Connect-XIP, the limit is 8 Touchpads. To confirm number of Touchpads connected, log into your account.
- Tap the "Restart" button to try again.

5. **Connect to Wi-Fi** to enable weather updates, cameras, and other cloud related functions, or skip if you don't have Wi-Fi. If connecting to Wi-Fi, verify signal strength is more than 35, then select your network and press "Continue". Enter the Wi-Fi password and select "Continue". Once completed, a successfully connected message will appear. Select "Continue".

Note: The panel must be connected to the same network via ethernet to access cameras and weather. If your panel is not connected to the same network, we still recommend connecting to Wi-Fi for Touchpad updates. The Touchpad cannot connect to the panel over an unsecured or open network.

6. **Mount the Touchpad.** Refer to section "Touchpad Mounting Options" for mounting instructions.
7. **If using to access cameras,** you must log in to the Alula Cloud.
8. **Test the Touchpad** by arming and disarming the panel from the Touchpad.

Hardwired Installation Overview for Connect-XiP

1. **Choose a mounting location.** Touchpad can be mounted on a wall or tabletop. Refer to Touchpad Mounting Options for instructions.
2. **Wire the Keypad to the panel BUS.**
3. **Mount the Touchpad** to the wall by pressing the Touchpad into the wall mount bracket.
4. **Power the panel and put the panel into enroll mode** by pressing the enroll button for 2-3 seconds. When it enters enroll mode, it will beep.
5. **On the Touchpad,** select a language, then select BUS enrollment and follow the enrollment steps.
6. **Once Touchpad enrollment is complete,** a successfully connected message will appear on the Touchpad. Select "Continue".
7. **Connect to Wi-Fi** to enable weather updates, cameras, and other cloud related functions, or skip if you don't have Wi-Fi. If connecting to Wi-Fi, verify signal strength is more than 35, then select your network and press "Continue". Enter the Wi-Fi password and select "Continue". Once completed, a successfully connected message will appear. Select "Continue".

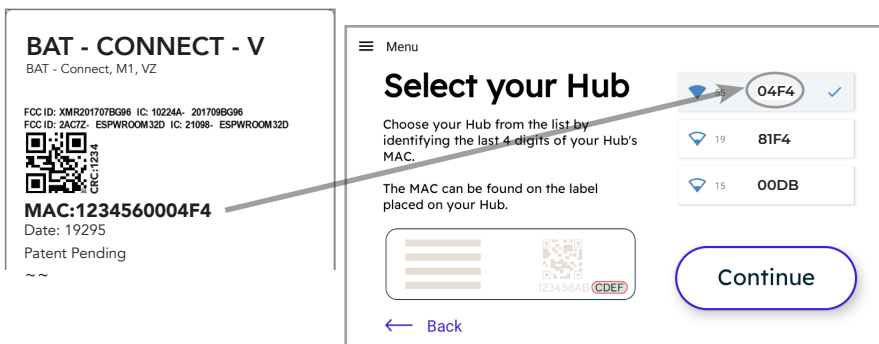
Note: The panel must be connected to the same network via ethernet to access cameras and weather. If your panel is not connected to the same network, we still recommend connecting to Wi-Fi for Touchpad updates. The Touchpad cannot connect to the panel over an unsecured or open network.

8. **Test the Touchpad** by arming and disarming the panel from the Touchpad.

Installation Overview for BAT-Connect

1. **Chose a mounting location.** Touchpad can be mounted on a wall or tabletop.
2. **Identify your security hub** and verify signal strength before mounting it permanently.

1. Ensure the system is powered.
2. Power the Touchpad by applying AC power to the provided power supply.
Note: The Touchpad cannot run off the original panel bus power. Existing wiring needs to be moved to the provided power adapter. For additional details, please refer to the Mounting Options section.
3. Select "Get Started". A list of available security hubs will be displayed. If the "Get Started" option is not available select "Menu" and then "Factory Default". The Touchpad should be directly connected to the BAT-Connect access point. The Touchpad can access the internet directly through the BAT-Connect. **Note:** Internet access allows for camera control, weather updates, and the ability to modify users.
4. Once a security hub is determined, verify the signal strength. If the signal strength displayed is less than 35, relocate the Touchpad or BAT-Connect.
Note: In order for the Touchpad to access the internet through the BAT-Connect access point, the BAT-Connect must be connected via ethernet or Wi-Fi.



3. **Select a security hub** by selecting the last 4 digits of your BAT-Connect's MAC. Press "Continue".
4. **Enter the CRC** of the BAT-Connect, which can be found on the inside cover. Put the BAT-Connect into enroll mode by pressing the enroll button on the BAT-Connect for 2-3 seconds. When it enters enroll mode, the DEVICE LINK LED will start flashing. Once Touchpad enrollment is complete, a successfully connected message will appear on the Touchpad. Select "Continue". **Note:** If the wrong panel was selected, press the "Restart" button in the side menu.

Troubleshooting Steps if Enrollment Fails:

- Confirm the system is disarmed and in wireless enrollment mode. The DeviceLink LED on the BAT-Connect will flash when in enrollment mode.
- Check whether the panel is already full. The limit is four Touchpads. To confirm number of Touchpads connected, log into your account.
- Tap the "Restart" button to try again.
- BAT-Connect cover must be open for Enrollment Mode.

5. **If your BAT-Connect is cell connected** we recommend configuring a Wi-Fi network for Touchpad updates. If connecting to Wi-Fi, verify signal strength is more than 35, then select your network and press "Continue". Enter the Wi-Fi password and select "Continue". Once completed, a successfully connected message will appear. Select "Continue".

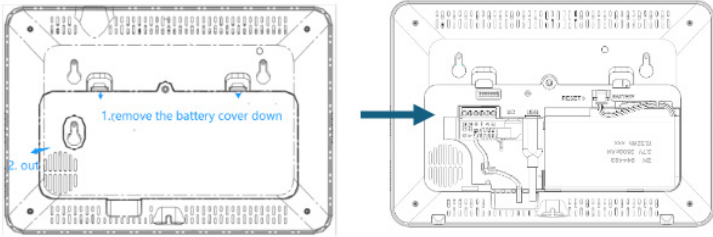
6. **Mount the Touchpad.** Refer to section "Touchpad Mounting Options" for instructions.

7. **If using cameras,** internet access is required. In order to access the internet, your BAT-Connect must be connected via ethernet or Wi-Fi. In addition you must log in to the Alula platform using the account owner username and password.

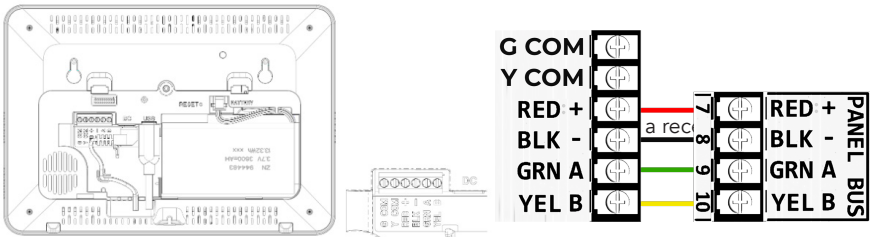
8. **Test the Touchpad** by arming and disarming the system from the Touchpad.

Touchpad Tablet

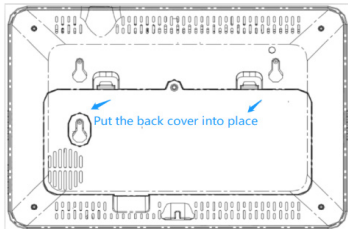
1. Remove the back cover



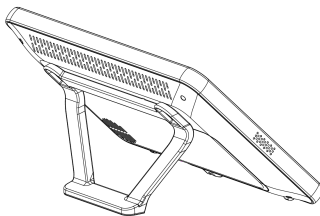
2. Connect the wires as follows

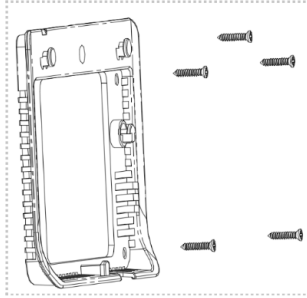


3. Reinstall the back cover and ensure it is fully seated

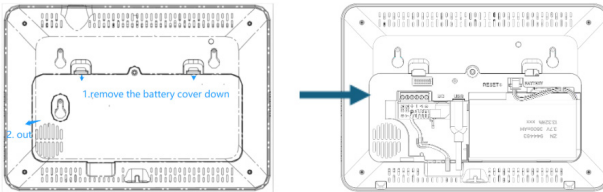


4. Attach the tabletop stand



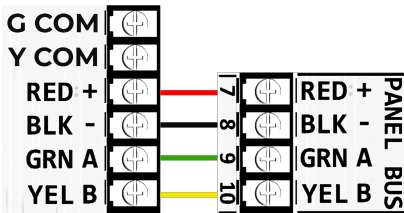


2. Remove the Touchpad back cover



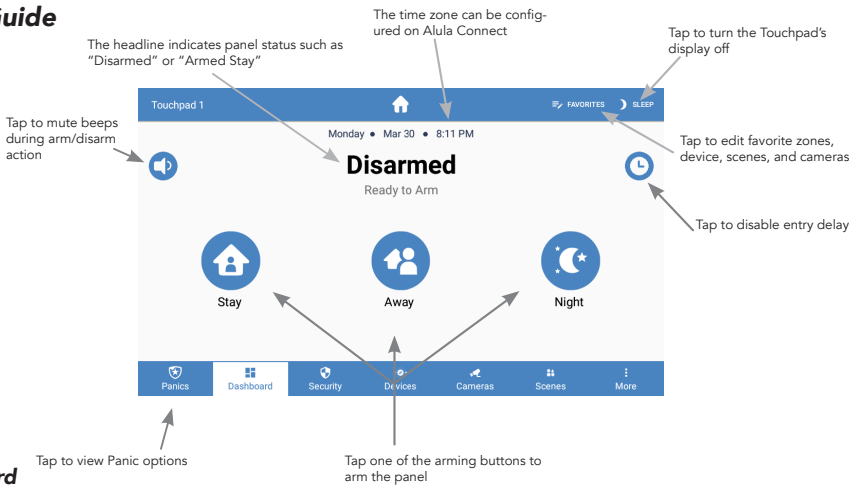
3. There are two methods for connecting power to the Touchpad.

A. BUS Connection, When connecting to the Connect-XIP BUS, connect the wires as shown below:



B. Power Supply. Barrel jack of the power supply can be plugged directly into the back of the Touchpad. Wires can be routed through wire channel in the back of mounting base. This configuration requires the barrel jack be routed through the mounting base before the mounting base is screwed to the wall.

Menu Guide



Dashboard

- Favorites - is a customizable collection of sensors, Z-Wave® devices, cameras, and scenes that can be easily accessed from the Touchpad Dashboard

Security

- History - shows event history
 - Attention - shows all opened, bypassed, or troubled zones and peripherals
- Note:** Zone name and chime options can be edited by selecting a zone. User pin authentication is required. Zones and peripherals can be renamed via the menu option to the right of the zone name. Additionally zones can be bypassed or edited through the same menu.

Devices

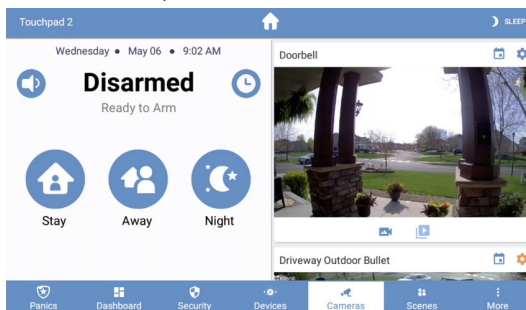
- Add/Remove Z-Wave devices using the "+ Add" or "- Remove" buttons in the app bar
- Lock and unlock Z-Wave door locks
- Configure Z-Wave door lock access codes
- Turn Z-Wave lights on and off
- Set dimmer level for Z-Wave dimmer switches
- Open and close Z-Wave garage door openers

Devices (continued)

- Control Z-Wave thermostats
- **PLEASE SEE Z-WAVE USER GUIDE FOR ADDITIONAL INFORMATION****

Cameras

- Cameras can be viewed directly from the Touchpad. Live view, clips, and event notifications are supported. Doorbell live view will automatically be displayed when the doorbell button is pressed. Internet access is required.



Scenes

- Create scenes from the Touchpad by clicking the "+ Add" button
- Enable/disable scenes with the toggle button
- Navigate to the edit scene page by selecting an item in the list
- Rename a scene by selecting the name label in the top bar
- Modify the scene by adding/removing triggers and actions

More - System

• Status

- Troubles - shows all system troubles
 - If a system trouble condition exists, the panel will sound trouble beeps
 - To silence the trouble beeps for 24-hours:
 - Go to system page
 - Select the Silence button [upper right corner]
 - Smoke Reset - When a smoke detector needs to be reset it will appear here. Tap and confirm to reset.
Note: This is supported for Napco panels. To reset smokes on all other panel types navigate to Settings -> Panel -> Reset Sensors.
- Status Updates - shows all status updates

• Touchpad

- Battery - shows battery level and charging information
- Network - shows network the Touchpad is connected to
- Access point MAC
- Wi-Fi signal strength - must not be less than 35
- Response Time
- Wi-Fi channel
- Touchpad Firmware
- Touchpad Hardware
- Touchpad Branding - shown if branding is applied
- Updater Firmware
- Android build
- Serial Number
- FCC/IC information
- Uptime

More - Settings

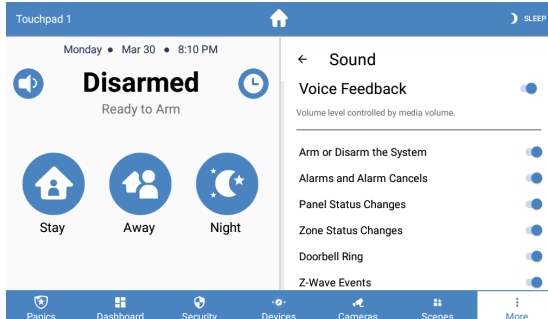
• Display

- Brightness - adjust slide bar to change brightness level
- Auto sleep display - when enabled the Touchpad screen will go to sleep after programmed period of inactivity. When auto sleep is disabled, the Touchpad will show wallpapers with time and arming level. Show Wallpaper shows/hides wallpaper images. If disabled the background is black.
- Entry wake - when enabled the screen will turn on during entry delay
- Clean screen - ignores touch input on the screen for 30 seconds to allow user to clean the screen

• Sound

- Voice Feedback - When enabled the Touchpad will announce system status updates. The type of updates each Touchpad announces is configurable.
- Media Volume - Controls voice feedback and doorbell notification volume.
- Status & Keypress Volume
 - Security System Status Sounds
 - Chime - Allows chime on this specific Touchpad. You must enable the panel global chime. This setting is used to disable chime on a per touchpad basis.
 - Keypress Sounds
- Alarm Volume
- Doorbell Tone - Select a custom doorbell notification tone.

- Quiet Hours - Configure a time period where the Touchpad is quiet.



- **Touchpad** (must enter code to access)

- Firmware Update Available - Touchpad updates may require internet access to complete download. When updates are available, the Touchpad will prompt to join a local Wi-Fi network to complete the download and installation. After the update is complete, Touchpad will return to normal operation. **Note:** This option is only visible if there is an update waiting to be downloaded.
- Show Favorites - display favorites menu that shows frequently used zones, scenes, and devices on dashboard
- Show Panics - ability to turn off individual panics (this option can only be viewed when using installer or dealer code)
- Lock to Dashboard
 - When enabled only the dashboard menu can be accessed without an access code
 - When disabled no access code is needed to navigate outside of dashboard
- Return to dashboard - specifies time of inactivity before Touchpad will automatically return to dashboard
- Navigation - select which items should be accessible via the bottom navigation
- Notifications - ability to turn on and off notifications on the system overview page
- Wi-Fi
 - Primary Network - this is the preferred Wi-Fi network for communicating with the Connect-FLX, Connect-XiP or BAT-Connect.

- **Touchpad** (continued)

Configuring the primary network to your Wi-Fi router will allow you to view cameras, get weather updates, and manage users. Your Connect-FLX, Connect-XiP or BAT-Connect must be connected to the same network to allow security communications. If your Wi-Fi router is configured as the primary network and communication with the panel is lost, the Touchpad will use the direct connection as a backup communication path.

- Update Network - connect to your Wi-Fi router to quickly download Touchpad updates. This network will only be used when an update is available. It is recommended to configure an update network if your primary network is a Connect-FLX, Connect-XiP or BAT-Connect direct access point. If your primary network is your Wi-Fi router there is no need to configure an update network.
- Temperature Scale - option for displaying °F or °C
- Alula Cloud - must be logged into Alula Cloud as the account owner to use cameras and user management features
- Power Off

- **Panel** (must enter code to access)

- Global Chime - enables or disables panel sensor chime mode
- Quick Arm - arm the panel without entering your access code. Access code is still required to disarm.
- Panel Status Volume
- Wireless Siren Status Volume

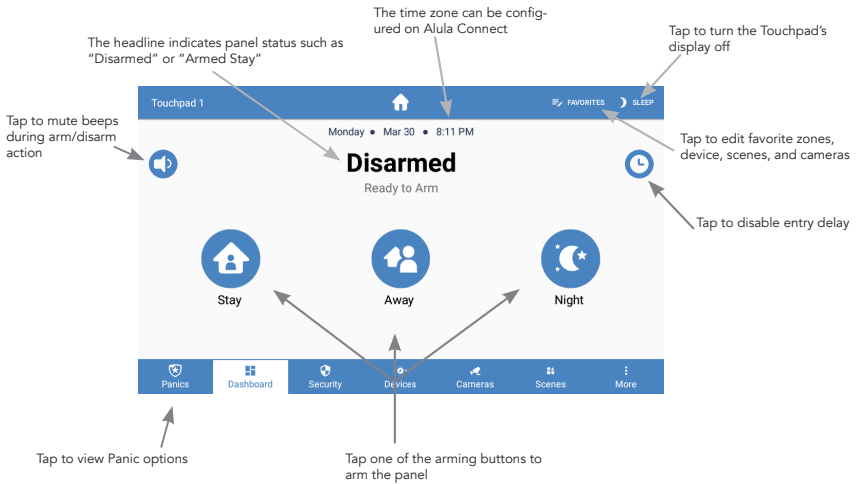
- Manage Access - manage device users directly from the touchpad (only the account owner can modify users, internet access is required)
- Edit Installer User - configure the system's installer access code and password.
- Dealer Code - configure the dealer code used by BAT-Connect to program the system
- **Note:** Only available for Napco panels.
- Push User Pins to Locks - if Z-Wave locks are present, this will erase all existing access codes from all door locks, and push all user pin codes to those locks. Pins will be cropped to 4 digits before being programmed into the locks.
- UL Compliant Mode - when enabled the Connect-FLX, Connect-XiP and BAT-Connect will adhere to UL standards. Dealer or Installer authority is required to configure this option.
- Keypads - lists the panel's keypads
 - Rename keypads by selecting an item on the list and holding it for 2 seconds
- Reset Sensor - when there are sensors that latch open, such as a smoke detectors, they can be reset here.
- Communication Test mode
 - The Touchpad will begin testing communications and display "TESTING".
 - After one minute, the Touchpad will show the result of the test which will be either "GOOD," "FAIR," OR "POOR".
 - If you get a "POOR" test result, try the test again from another location.
 - The following table lists the thresholds used to determine the outcome of the test.
 - If any statistic falls in the poor range, the test outcome is "POOR".
 - If there are no poor statistics and any statistic is in the fair range, the outcome of the test is "FAIR".
 - If all statistics are in the good range, the outcome of the test is "GOOD".

• **Panel** (continued)

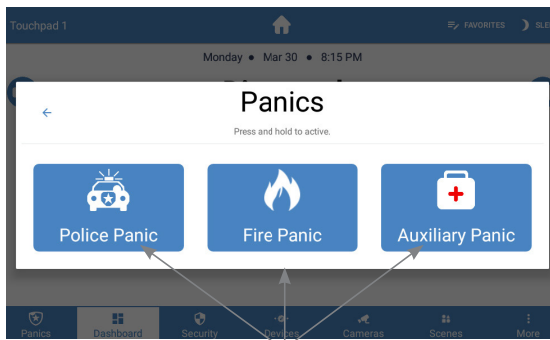
Statistic	Unit	GOOD	FAIR	POOR
Wi-Fi Signal Strength	dB	Over 39	35 to 39	Under 35
Communication Success Rate	%	Over 89	85 to 89	Under 85
Response Time Average	ms	Under 200	200 to 250	Over 250

- Check for updates - this will tell the panel to check for any system updates
- Z-Wave
 - Join/Leave Another Z-Wave Network - the panel can be placed into Z-Wave inclusion or exclusion mode to allow it to join/ leave existing Z-Wave networks.
 - Soft Reset - a soft reset will reset the Z-Wave controller software. All Z-Wave devices will remain enrolled.
 - Hard Reset - this action will cause your Connect-FLX, Connect-XiP or BAT-Connect Z-Wave module to be restored back to the default state. Warning: Performing this action results in all Z-Wave devices being removed from this Z-Wave controller. To add them back, you will first need to exclude them, and then include them again.
 - ****PLEASE SEE Z-WAVE USER GUIDE FOR ADDITIONAL INFORMATION****
 - About - lists information about the panel's installed hardware and software

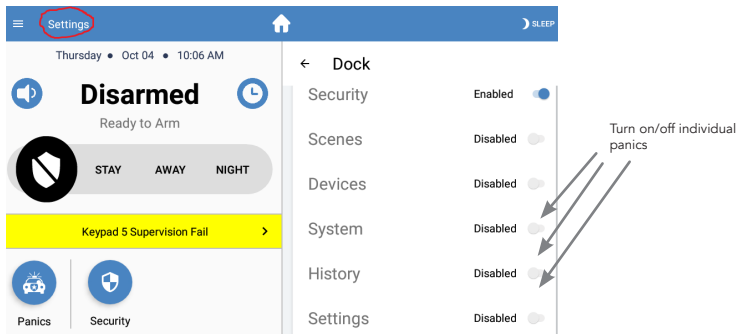
Home Screen Functions*



Panic Functions*



Hold for three seconds to trigger police, fire, OR auxiliary alarm



*These features were taken from an Alula panel. Your features may differ depending on panel.

Pro Tips

When a Touchpad is connected directly to the Connect-FLX, Connect-XiP, or BAT-Connect it remains available for use during momentary power outages. If the Touchpad is connected only via the premise Wi-Fi, Alula recommends that all network equipment including the Wi-Fi access point be connected to a suitable UPS to ensure system availability during power outage. The Touchpad may and typically should be installed with both premise and direct options, as it is designed to fall back to the direct connection during loss of the premise Wi-Fi connection (for any reason).

Push any extra wire into wall before sliding Touchpad onto mounting plate to ensure the wires don't get pinched. Drill a hole in the wall through any of the 4 mounting plate windows if no hole exists.

The Touchpad display turns off on its own after specified allotted time of inactivity (Auto sleep display setting). It will turn back on when the screen is touched, or for some alarm conditions. The screen can also be turned off manually by pressing "Sleep."

To unenroll the Touchpad navigate to the Settings menu and then to the section labeled "Panel." Put the panel, or BAT-Connect, into wireless enrollment mode and press the unenrollment button on the touchpad screen. **Note:** The unenroll button is displayed on the Touchpad only when the panel is in enrollment mode.

Weather can be added to the Touchpad if internet access is available. To add weather pull down from the top of the screen and select the Add Weather option. Once a location is configured live weather will appear in the pull-down menu or on the system overview screen when the Auto Sleep Display setting is disabled.

Connect-XIP AC Power can be determined via the green LED on the upper left hand side of the Touchpad housing.



Notes:

Battery should be replaced every 6 years under normal operating conditions.

Product is meant to be installed by a trained installer

Product is intended to be installed within the protected area

Follow installation instructions for replacement intervals, mounting positions, temperature limits, state-of-charge, and periods of inactivity to ensure proper battery life.

Test and maintain the Touchpad by arming and disarming the panel to ensure expected functionality.

To identify current software and firmware versions, use the AlulaConnect web portal.

Product should be installed in accordance with Chapter 2 of "ANSI/NFPA 72: National Fire Alarm and Signaling Code" (National Fire Protection Association, Batterymarch Park, Quincy, MA 02169)

Wiring methods that shall be in accordance with CSA C22.1, Canadian Electrical Code, Part I, Safety Standard for Electrical Installations; CAN/ULC S302, Standard for the Installation, Inspection and Testing of Intrusion Alarm Systems; and CAN/ULC S301, Standard for Signal Receiving Centre Intrusion Alarm Systems and Operations.

Specifications

Physical Specifications	
Wall Dimensions	7.75in[19.7cm] x 5.40in[13.7cm] x 1.10[2.8cm]
Table Top Footprint	7.75in[19.7cm] x 4.20in[10.7cm] x 4.20[10.7cm]
Weight	1lbs[450g]
Mounting Fasteners	M3.0 18mm screws & wall anchors (5 sets included)
Environmental Specifications	
Operating Temperature	32°F to 120°F (0°C to 49°C)
Maximum Humidity	85% non-condensing relative humidity
Device Specifications	
Power Transformer	RE012-6
Input	100-240VAC 50/60Hz 0.5A
Output	13.5VDC, 1A
Input Voltage	9VDC - 13.5VDC
Input Current (Standby)	5mA
Input Current (Alarm/Max)	350mA
Terminal Block Wire Gauge	16-24 AWG
Screen Resolution	1024 x 600 pixels
Screen Size	7 inches diagonally
Certifications	
RE665	UL1023, UL985, UL2610, ULC S304, ULC S545

Specifications subject to change without notice.

IC NOTICE

This device complies with Industry Canada license-exempt RSS standard(s). Operation is subject to the following two conditions:

- (1) This device may not cause interference, and
- (2) This device must accept any interference, including interference that may cause undesired operation of the device.

Le présent appareil est conforme aux cnr d'Industrie Canada applicables aux appareils radio exempts de licence. L'exploitation est autorisée aux deux conditions suivantes:

- (1) L'appareil ne doit pas produire de brouillage, et
- (2) L'utilisateur de l'appareil doit accepter tout brouillage radioélectrique subi, même si le brouillage est susceptible d'en compromettre le fonctionnement.

TRADEMARKS

Alula and BAT-Connect are trademarks owned by Alula Holdings, LLC. Android is a trademark of Google LLC. Z-Wave is a registered trademark of Silicon Labs. Wi-Fi is a trademark of the Wi-Fi Alliance.

FCC WARNING

This equipment has been tested and found to comply with the limits for a Class B digital device, pursuant to part 15 of the FCC Rules. These limits are designed to provide reasonable protection against harmful interference in a

residential installation. This equipment generates, uses and can radiate radio frequency energy and, if not installed and used in accordance with the instructions, may cause harmful interference to radio communications. However, there is no guarantee that interference will not occur in a particular installation. If this equipment does cause harmful interference to radio or television reception, which can be determined by turning the equipment off and on, the user is encouraged to try to correct the interference by one or more of the following measures:

- Reorient or relocate the receiving antenna.
- Increase the separation between the equipment and receiver.
- Connect the equipment into an outlet on a circuit different from that to which the receiver is connected.
- Consult the dealer or an experienced radio/TV technician for help.

This device complies with Part 15 of the FCC rules. Operation is subject to the following two conditions:

- (1) This device may not cause harmful interference.
- (2) This device must accept any interference that may be received, including interference that may cause undesired operation.

Caution: any changes or modifications to this device not explicitly approved by manufacturer could void the user's authority to operate this equipment.

The device has been evaluated to meet general RF exposure requirement. The device can be used in portable exposure condition without restriction.